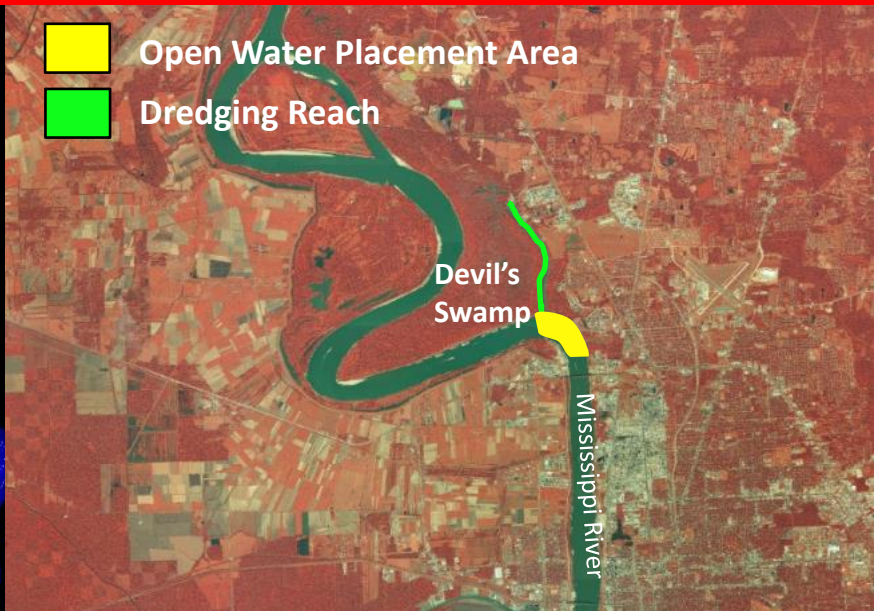


MISSISSIPPI RIVER AND TRIBUTARIES

BATON ROUGE HARBOR (DEVIL'S SWAMP)



FY 2022 MAINTENANCE DREDGING

PROJECT: Mississippi River & Tributaries
REACH: Baton Rouge Harbor (Devil's Swamp)
OPERATIONS MANAGER: Tim Connell
PHONE: (504) 862-2360
LOCAL SPONSOR: U.S. Government

Maintain 12' x 200' and 2.5 mile long channel from junction with Mississippi River.

HISTORICAL DREDGING FREQUENCY: Annual
LAST DREDGED: 2021
TYPE OF DREDGE: Cutterhead
ESTIMATED QUANTITY: 100,000 CY
ESTIMATED COST: \$400,000

ADVERTISE: Sept 2021
OPEN BIDS: TBD
AWARD: TBD
START WORK: TBA
DURATION: Approximately 10 days

DREDGING REACH: Devil's Swamp
DISPOSAL AREA: Mississippi River
DISPOSAL TYPE: Open Water
REMARKS: Dredged material discharged beyond -20 foot contour.

NOTE: We have historically limited maintenance dredging activities to channel dimensions at the intersection of Baton Rouge Harbor and the Mississippi River

Fiscal Year	Contract	Disposal Area	Dredging Quantity (CY)
2001	01-C-0063	MR Open Water	260,722
2002	02-C-0059	MR Open Water	46,749
2003	03-C-0056	MR Open Water	6,763
		Bank Stabilization	89,351
2004	04-C-0052	MR Open Water	63,901
2007	06-C0190	MR Open Water	34,900
	07-C-0083		39,412
2008	08-C-0057	MR Open Water	31,300
2010	09-C-0102	MR Open Water	461,412
2011	10-C-0106	MR Open Water	54,781
2012	12-D-0007	MR Open Water	71,647
2014	13-D-0010	MR Open Water	105,871
2015	15-D-0024	MR Open Water	62,844
2016	15-D-0024	MR Open Water	55,399
2017	Wallace McGeorge	MR Open Water	115,778
2018	17-D-0008	MR Open Water	97,496
2019	17-D-0008	MR Open Water	70,029
2021	19-D-0012	MR Open Water	30,169